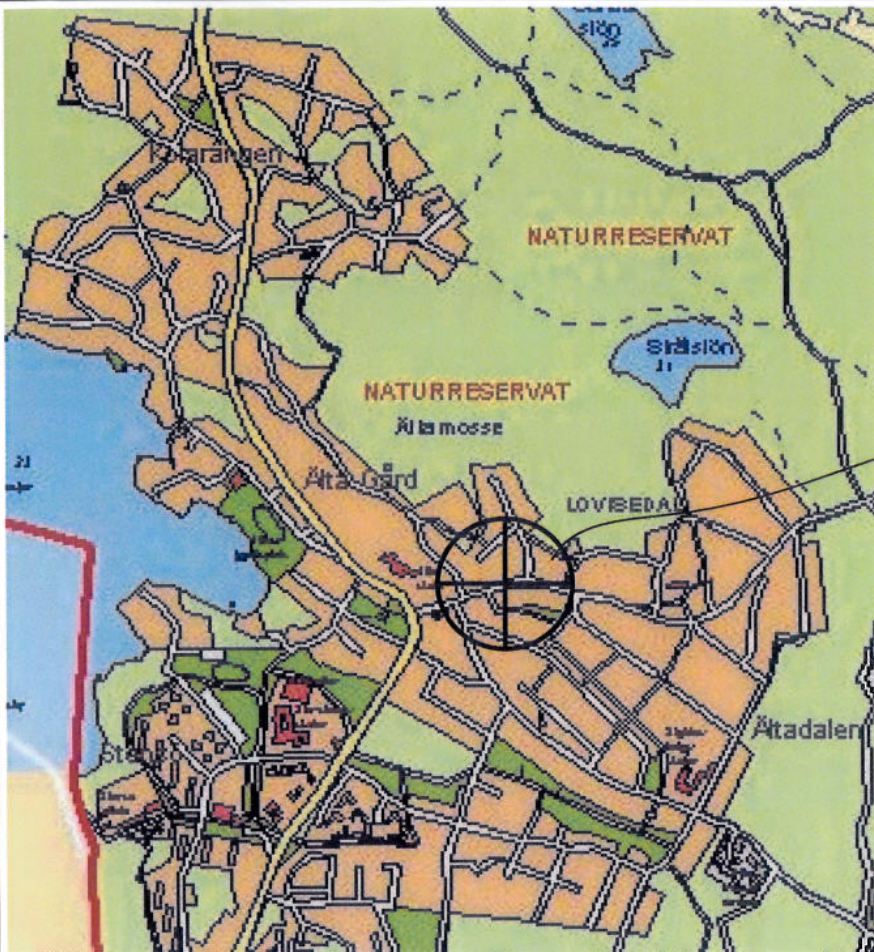
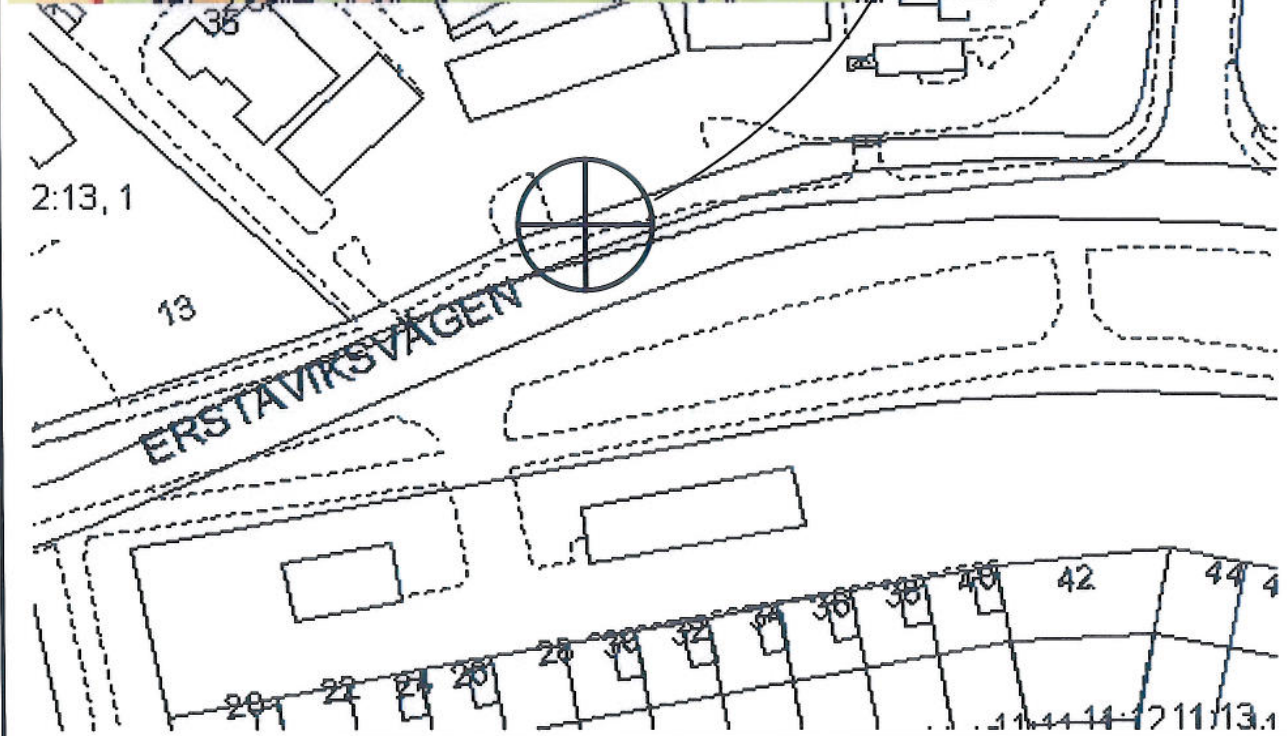


2008 -10- 13

233 1029/2008



Ny
belysnings-
stoppe med
antennor



TELE2

Tele2 Sverige AB
Box 82, 164 94 KISTA
Phone: + 46 8 88 28 40 00

NCC

NCC Construction Sverige AB
170 80 SOLNA
Phone: + 46 8 85 85 10 00

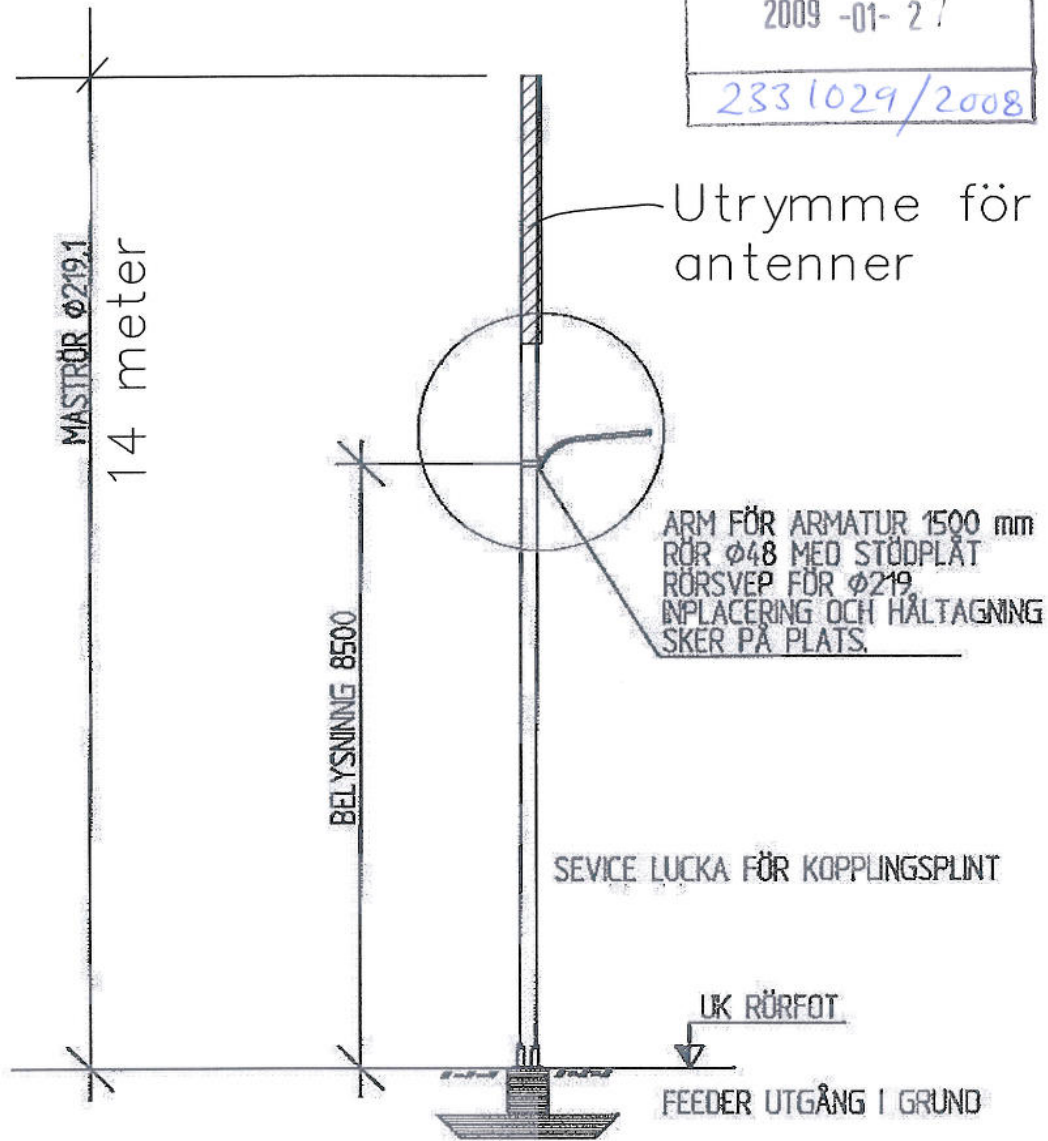
NAC731/SE_(20355)

ÄLTA
ÄLTA_10:1
VY

ISSUE DATE:	DRAWN BY:	REVISION DATE:	REVISION BY:	DRAWING ID:	REV
2008-05-23	LARSPALMQ	REV_DATE	REV_BY		

Typskiss kombinerad
belysnings och
antennstolpe.
Antennerna är
placerade inuti
maströret

NACKA KOMMUN
BYGGLOVENHETEN
2009 -01- 27
233 1029/2008



TEI F2

Tele2 Sverige AB
Box 62, 164 94 KISTA
Phone: + 46 8 55 28 40 00

NCC

NCC Construction Sverige AB
170 80 SOLNA
Phone: + 46 8 55 65 10 00

NAC731/SE_(20355)
ÄLTA
ÄLTA_10:1
TORN

ISSUE DATE:	DRAWN BY:	REVISION DATE:	REVISION BY:	DRAWING ID:	REV
2008-10-02	LARSPALMQ	2009-01-27	LARSPALMQ		

COUNTY MUNICIPALDISCIPLINE

Alternativa
platser

Ny
belysningsstople
med antenner



Kabinett/teknikbod



Tele2 Sverige AB
Box 62, 164 94 KISTA
Phone: + 46 8 56 26 40 00



NCC Construction Sverige AB
170 80 SOLNA
Phone: + 46 8 55 85 10 00

NAC731/SE_(20355)

ÄLTA
ÄLTA_10:1
VY

NACKA KOMMUN
BYGGLOVENHETEN

ISSUE DATE:	DRAWN BY:	REVISION DATE:	REVISION BY:	DRAWING ID:	REV
2008-05-23	LARSPALMQ	REV_DATE	REV_BY		

2008 -10- 13

COUNTY MUNICIPAL DISCIPLINE

233 1029/2008